



## Diagnostic Software for Porsche – User Guide

---

### Contents

About Durametric .....	3
Included in the Kit.....	3
Product Variations .....	4
How the Program Works .....	4
Installation .....	5
Check System Requirements .....	5
Install the Software.....	5
Connect the Cables .....	5
Using Durametric .....	6
Start the Program .....	6
Choose Vehicle .....	6
Main User Interface .....	7
Screen Layout .....	8
Control Unit Functions.....	10
Identification.....	11
Information .....	11
Fault Codes/Shadow Fault Codes .....	11
Erase Fault Codes/ Erase Shadow Fault Codes .....	12
Actual Values .....	12
Input Signals.....	15
Ready Status .....	16
Activations .....	16
Coding .....	17
System Test <<<Not yet complete >>> .....	19
Commands .....	20
Command Console.....	20
Reset Service Reminders .....	20
Short Test.....	21

Set Workshop Information .....	21
Work Log.....	22
To Enable the Work Log.....	22
To Review a Work Log.....	23
Updating the Software.....	23
Updating the Cable Firmware .....	23
Porsche Diagnostic Connector Locations.....	24
Factory Racecars .....	24
Common Problems and Solutions.....	25
Computer Performance Suggestions .....	26
Send Log to Durametric .....	27
Index .....	28

## About Durametric

Durametric Software Inc. is comprised of software engineers and automotive enthusiasts alike. As automotive enthusiasts, we understand the value of solid, effective tools in the workshop. As engineers, we work hard to develop intuitive, comprehensive software and robust hardware to create an overall package that meets our customers' high standards – and ours.

The Durametric tool for Porsche is a hardware and software-based tool. The software program installs and runs on your Microsoft Windows computer and manages communication between you and the car. The hardware consists of one or more cables that connect between your computer and the car and facilitates communications between the program and the car. With a primary focus on diagnostics, the tool provides communications with the various systems to read, display, and clear trouble codes, reset service reminders, activate system components, display and capture live values, and alter code settings.

## Included in the Kit

Depending on the product kit you purchased, some or all of the following cables will be included with your package: standard interface cable, early-model adapter cable, 50' extension cable, racecar adapter cable. We do not include a software installation CD with your order. You must download and install the Durametric software directly from the Durametric web site, [www.durametric.com](http://www.durametric.com).



Standard interface cable



Early-model adapter cable



50' extension cable



Racecar adapter cable

## Product Variations

Durametric offers three varieties of diagnostic kits for Porsche: Enthusiast, Professional, and Professional Racing. With the exception of coding and command console features, all kits provide the same diagnostic capabilities across the same range of standard-production cars. The coding and command console features are available with the Professional kits only. Only the Professional Racing kit supports Porsche factory racecars in addition to standard-production cars.

- **Enthusiast Kit:** Intended for the private owner of Porsche, the Enthusiast kit comes complete with one USB-to-ODBII standard interface cable. If purchased, your kit might also include the early-model adapter cable with the nineteen-pin, early-model adapter cable. The Enthusiast kit is limited to use on three cars managed by VIN. Durametric enforces this limit by storing the car's VIN in the memory of the cable. After you use the cable on three cars, it will only continue to function on those three cars.
- **Professional Kit:** Intended for the service repair shop, the complete Professional kit comes with one USB-to-ODBII standard interface cable, one 50' extension cable, and one nineteen-pin, early-model adapter cable. Variations to this kit also exist. You can use the Professional version on an unlimited number of cars.
- **Professional Racing Kit:** Intended for service repair shops and Porsche racecar support teams, this kit supports all diagnosable, standard-production Porsche models and Porsche factory racecars. You can use this kit on an unlimited number of cars. This kit comes complete with one USB-to-ODBII standard interface cable; one 50' extension cable; one nineteen pin, early-model adapter cable; and one racecar adapter cable.

## How the Program Works

The completely redesigned Durametric program makes use of a new and innovative software platform. The new software platform has three main components: 1) the "Framework" 2) the "CAR files," and 3) the "ECU files."

The Framework is the core of the new software. It maintains control over all other components of the tool including the user interface and communication with the standard interface cable and car. The Framework gets information from the CAR files in order to reference control units associated with the many different Porsche models. It gets information from the ECU files so it can communicate effectively with those control units.

Each Porsche model comes equipped with a number of electronic control units. The CAR files are simple XML files that list each possible control unit in a given model. The Framework uses the CAR files to reference the Durametric ECU files.

The ECU files are XML files that contain control unit address information, unit ID and descriptions, possible fault codes and their descriptions, activation options, and other ECU-specific details. The Framework uses the information in the ECU files to interact with the control unit. The Durametric user interface displays much of the information contained in the ECU file, such as available options and fault code descriptions.

With the introduction of this platform, Durametric can support more features on a greater number of control units at a faster pace of release.

## Installation

The following sections will guide you through a successful installation of the Durametric software.

### Check System Requirements

The following is a list of the minimum system requirements for the effective use of the tool. Check to be sure your system meets or exceeds these requirements and has the prerequisite software installed.

- Windows XP, Vista, or Windows 7 (All versions, including 32- and 64-bit versions)
- 1.8 GHz dual-core processor or faster
- 1 GB Memory (RAM)
- 1 GB available disk space
- Available USB 2.0 port (*USB 3.0 not yet supported. Computers supporting USB 3.0 not recommended.*)
- Internet Explorer 6.0 or later
- Available Internet connection (required for program installation and updates)
- Screen resolution of 800x600 or greater
- Microsoft® .NET Framework 2.0 or 3.5 sp1 (free download, not required for Windows 7)
- Adobe Acrobat Reader (for reading and printing documentation)
- Durametric 2<sup>nd</sup>-generation cable (sold exclusively since March 2008)

### Install the Software

After you install the necessary supporting software you can install the Durametric software.

1. Using your Internet browser, go to [www.durametric.com](http://www.durametric.com).
2. Select *Downloads* from the left column.
3. Select *Version 6*.
4. Install the *Durametric cable drivers*.
5. Install the *Durametric software program*. If you do not have Microsoft .NET Framework 2.0 or 3.5 sp1 installed, the program will prompt you to install it before continuing.
6. When prompted with the security warning, click *Install*.

Upon successful installation of the software, you are ready to use Durametric.

### Connect the Cables

**WARNING:** Do NOT use a power inverter to power your computer when using Durametric.

Depending upon the kit you ordered, you will have one, two, three, or four cables. Before starting the Durametric program, connect the tool to your car as follows:

1. Switch on the car's ignition.
2. If the car is a 2005 model or newer, turn on the hazard lights (emergency flashers).
3. Connect the OBDII-end of the standard interface cable to the diagnostic port on your car.

- a. If you purchased the 50' extension cable, you can connect it between the male OBDII-end of the standard interface cable and the car.
  - b. If you are working on early-model cars and have the early-model adapter cable, connect it between the standard interface cable and car or between the 50' extension cable and the car.
  - c. If you are working on a Porsche factory racecar and have the Durametric Cup car adapter cable, connect it between the standard interface cable and car or between the 50' extension cable and the car.
4. Verify a steady green light on the Durametric cable indicating power from the car.
  5. Connect the standard interface cable's USB connector to the USB port on your computer.

## Using Durametric

Durametric is equipped with many of the same capabilities and features of the Porsche factory tools. The following sections guide you through the many features of the program to help you get the most from your tool.

### Start the Program

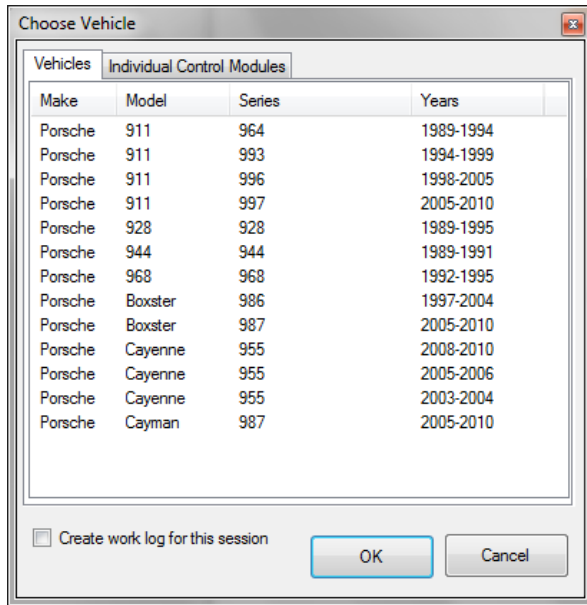
Connect the cables before starting the program. To start the program after its initial installation:

1. Click the Windows *Start* button.
2. Select *All Programs | Durametric 6*.

Upon starting the program, you will see the Durametric logo screen(s) of the main program.

### Choose Vehicle

The first screen to appear after successful installation of the software is the *Choose Vehicle* dialog. Here you can choose a car based on make, model, series, and year. Alternatively, you can choose a specific control unit from the list of all supported control units found under the *Individual Control Modules* tab of the *Choose Vehicle* dialog.

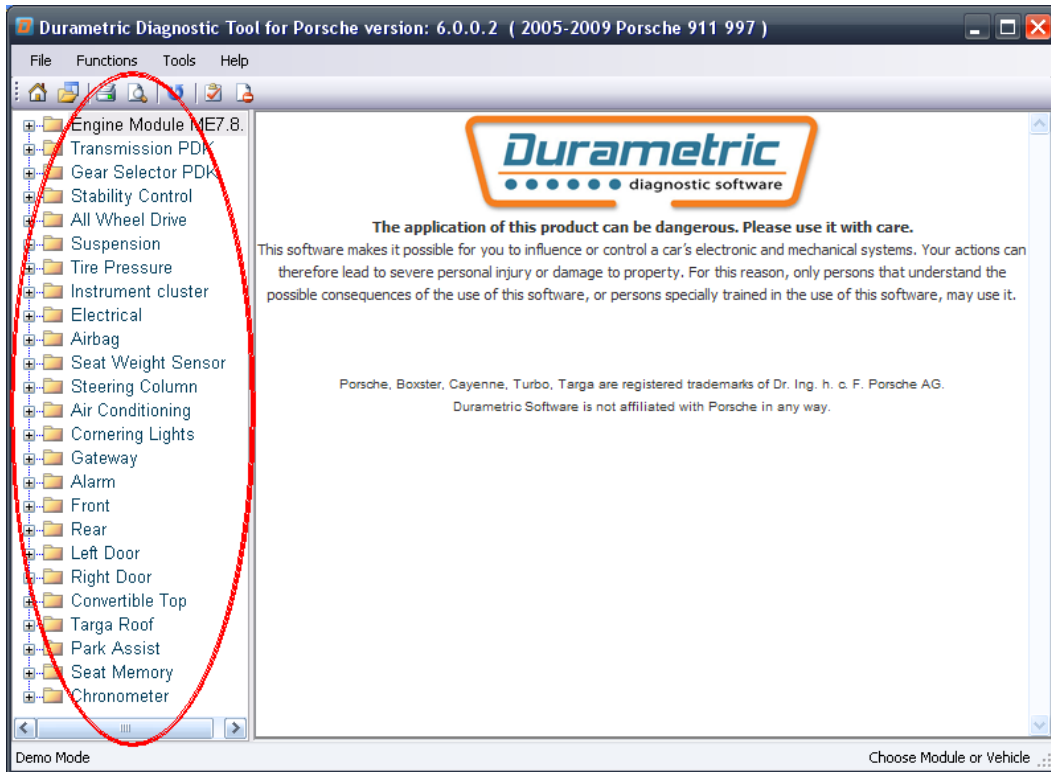


Select a model or individual control unit from the *Choose Vehicle* dialog

## Main User Interface

The main user interface now appears. When you select a model from the *Choose Vehicle* dialog, the program displays a list of supported control units in the left-hand pane. If you select a single control unit from the *Individual Control Modules* tab of the *Choose Vehicle* dialog, the software displays only that control unit.

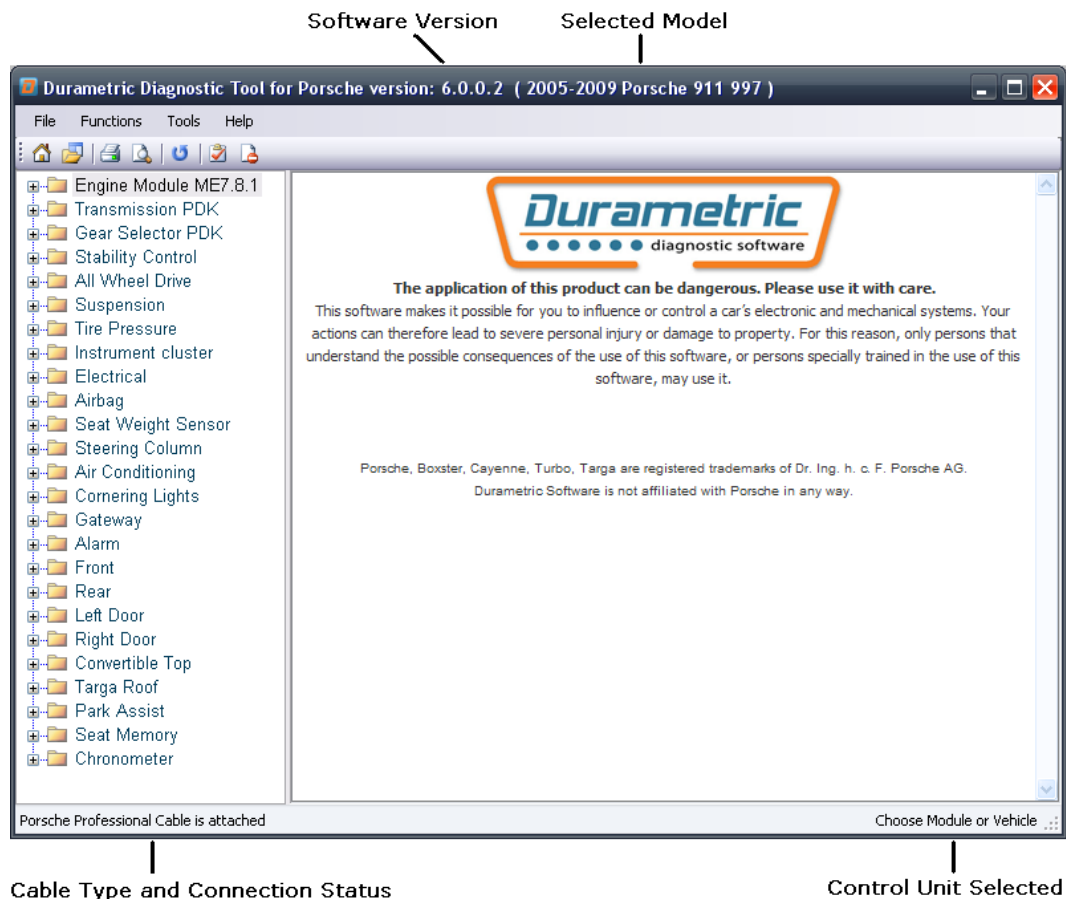
Double-click a control unit in the left-hand pane to reveal available functions for that control unit. Alternatively, click the “+” sign next to any of the control units to reveal the same list of functions.



Select from supported control units in the left-hand pane of the main user interface.

### Screen Layout

The Durametric screen displays several key points of information, including software version, selected model, status of the cable connection, and the control unit selected.










## Menu options

- File
  - Start over – opens the *Choose Vehicle* dialog to select a different model
  - Open work log – opens a Browse window for the selection of a previously-saved work log (see Work Log section for details)
  - Open ECU file – opens a Browse window for the selection of a stand-alone ECU file. Used by Durametric technical staff for troubleshooting purposes.
  - Print – sends the current view of data to the default printer
  - Print setup – not currently supported
  - Exit – closes the Durametric program
- Functions
  - Short test all modules– starts a check of all control units for fault codes
  - Clear faults in all modules – used to clear all fault codes in all supported control units of the selected model
  - Refresh current view – used to request updated fault codes are live data from a control unit

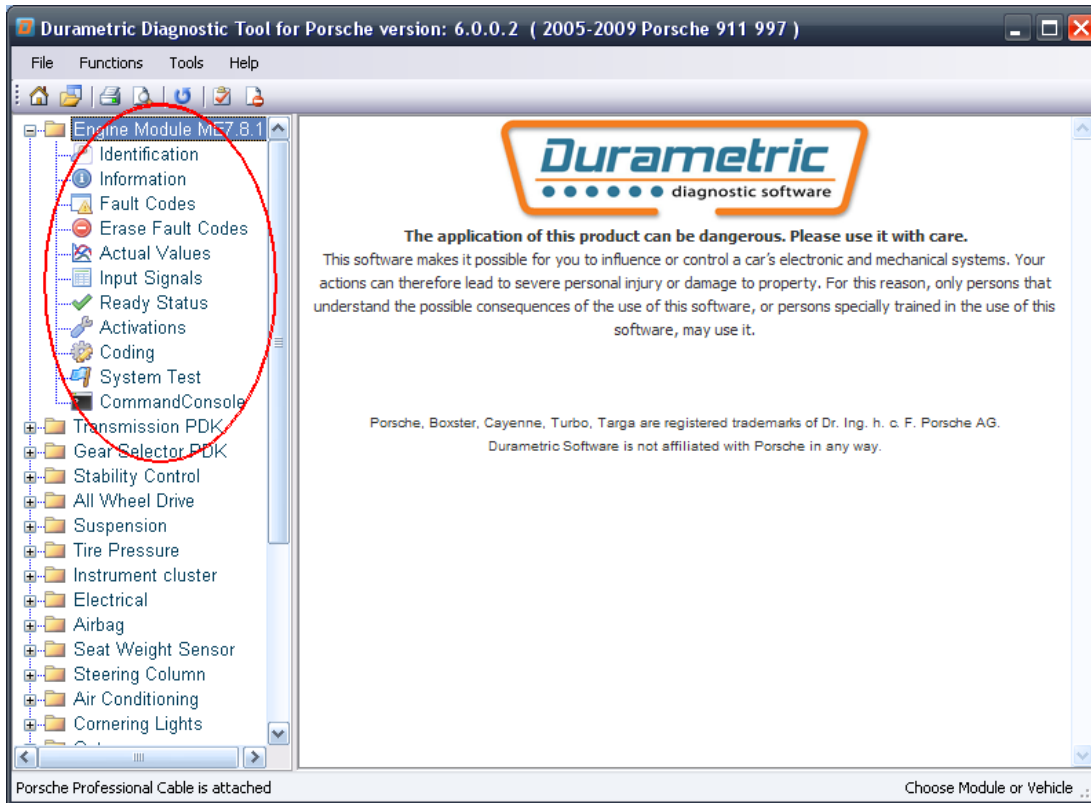
- Set workshop information – opens the *Set Workshop Information* dialog (see Set Workshop Information section for details)
- Tools
  - Tool information – opens the Tool Information screen that provides cable type, cable status, cable serial number, and software / firmware version details
  - Logging
    - Logging enabled – enables logging for troubleshooting purposes
    - Send log to Durametric – opens the Send Communications Log screen (see Send Log to Durametric section for details)
  - Check for update – uses an available Internet connection to check for software updates (see Updating the Software section for details)
  - Language – used to change the text of the user interface to one of many supported languages
- Help
  - Documentation – opens this guide in PDF format
  - Durametric WIKI – uses an available Internet connection to open the Durametric WIKI pages that cover car-specific troubleshooting information and more
  - About – opens information about the program and the program version

Icons at the top of the Durametric user interface provide access to common functions. These include:

-  New – opens the Choose Vehicle dialog to select a new vehicle
-  Open – opens saved work logs
-  Print – print the current page
-  Print Setup – not currently supported
-  Refresh – refresh the current view
-  Short test all units – runs a brief test of all control units in the car to check for fault codes
-  Clear faults in all units – attempts to clear all fault codes in all control units of the car

### Control Unit Functions

Each control unit supports one or more of several different functions. You can access these functions by expanding the list under each control unit.



View of control unit functions

In order of appearance, these functions include:

### ***Identification***

The Identification function is available for each control unit and displays information such as part number and supplier name.

### ***Information***

You can find the Information function under control units that support this feature. This option displays information such as the VIN and assembly number.

### ***Fault Codes/Shadow Fault Codes***

Fault codes, shadow fault codes, their descriptions, and fault status information are included in the display when supported by the control unit. The codes displayed are the same codes used by the factory tool and can be directly referenced in the factory service manual or other reputable repair manuals. Freeze frame details are included with supported engine control units. Freeze frame information includes various operating and environmental data taken at the time the fault appeared. You can use this information to aid in troubleshooting and to help resolve improper operation.

Control units store some faults for information-only purposes. In these cases, there is no repair action necessary. Durametric indicates the difference between actionable faults and information-only faults using two icons. The yellow circle icon with the exclamation point in the center indicates an information-

only fault. The red circle icon with the exclamation in the center indicates an actionable fault. Refer to your car's service repair manual for more information on information-only faults.



Information-only fault indicator



Actionable fault indicator

### ***Erase Fault Codes/ Erase Shadow Fault Codes***

To clear fault codes or shadow fault codes from the control unit's memory, click on the *Erase Fault Codes* or *Erase Shadow Fault Codes* option, respectively, for the control unit selected.

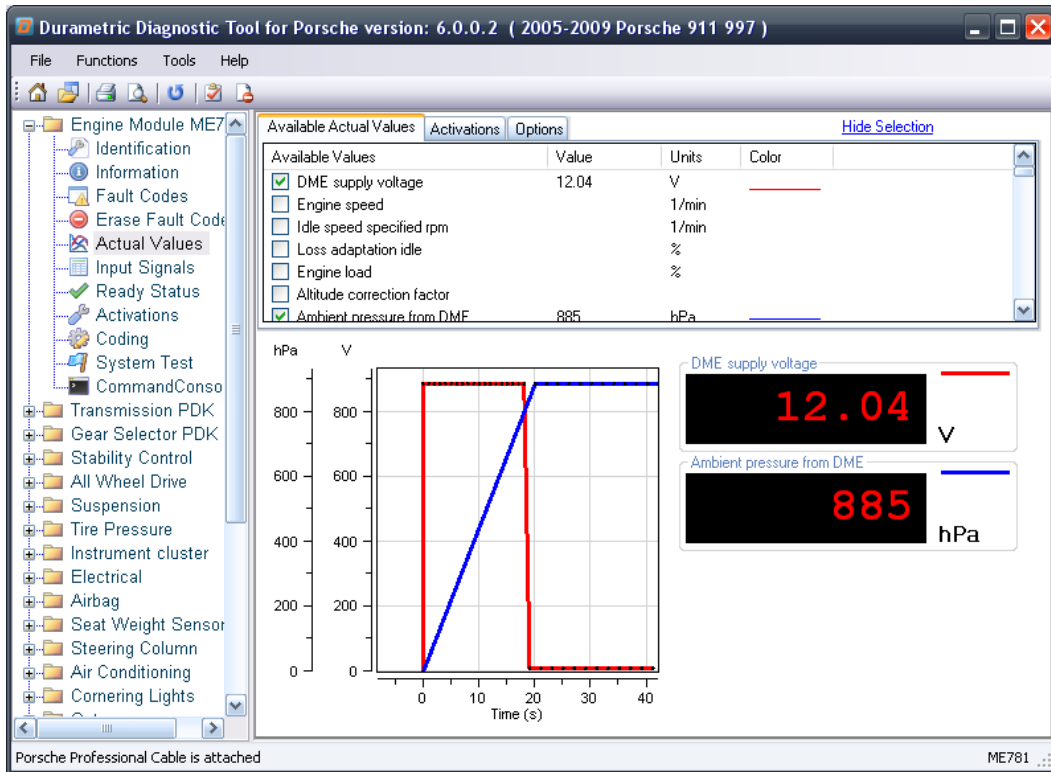
Alternatively, you can select to erase fault codes in all control units at once by selecting the *Functions* menu option and selecting *Clear faults in all units*.

It is not possible to erase only one fault code. If faults remain after attempting to clear them, it indicates the problem(s) causing the condition still exists. For example, if the fault you see is "Electrical fault, oxygen sensor ahead of catalytic converter bank 2," and you have not repaired the problem, you will not be able to clear the fault.

### ***Actual Values***

With Actual Values, you can monitor live data values managed by the control unit. The available value options are predominantly the same as those available in the latest Porsche factory tool.

Upon selection of a value, the data automatically appears in graph and/or in digital format as seen below. You can choose to view the data in graph format, digital format, or both, by selecting your preference on the Options tab.



Viewing live data in Actual Values

To use actual values:

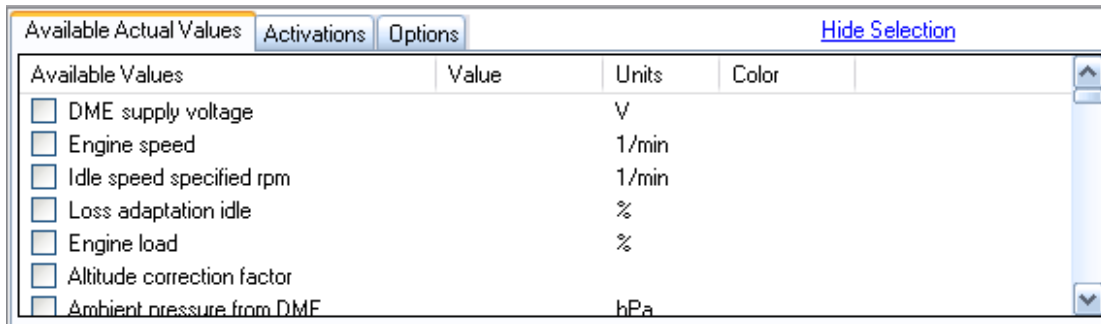
1. Select a control unit from the left-hand pane.
2. Click *Actual Values* (found on supported control units only).
3. In the right-hand pane under the *Available Actual Values* tab, select a listed value. Live values will appear in graph and digital format automatically.

Note: Avoid selecting more values than needed. The Actual Values process is very resource intensive for the control unit and the computer running the program. Selecting more options than necessary can seriously degrade program performance. For this reason, the program is limited to the selection of ten values. Also, note that sample rates vary by control unit. The newest control units sample much faster than earlier versions. Faster sampling rates require more computer resources.

There are three tabs found on the Actual Values screen:

- Available Actual Values
- Activations
- Options

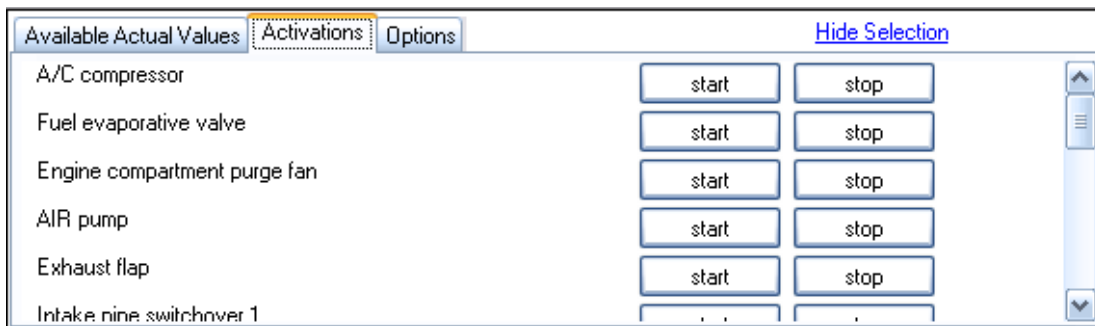
The tabs pane can be hidden to view a larger graph. To hide the tabs pane, click the *Hide Selection* link. To reveal the tabs pane, select the *Display Selection* link.



Select the desired actual value(s) under the Available Actual Values tab

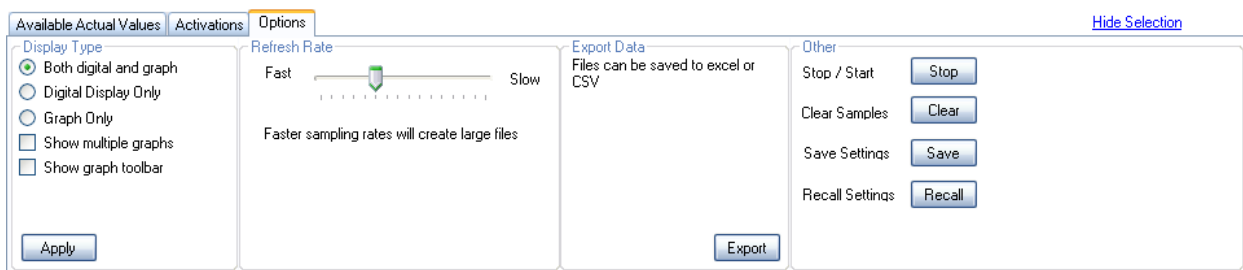
The Available Actual Values tab gives you a list of values supported by the control unit. Select a value or multiple values to request the data from the control unit. Data sampling begins automatically.

The Activations tab provides an easy access point to activate vehicle components that the selected control unit manages. You can use the activations to affect the Actual Values data output, giving you truly comprehensive troubleshooting capabilities and greater ease of use. Read more about activations under the *Activations* section of this document.



Using the Activations tab, you can activate supported components

The Options tab provides access to editable settings of the Actual Values feature.



The Options tab provides access to editable settings

Options tab settings and controls include the following:

- Display Type
  - Both digital and graph – shows data values in analog (graph) and digital format
  - Digital display only – shows data values in digital format only

- Graph only – shows data values in analog (graph) format only
- Show multiple graphs – shows each selected value on separate graphs
- Show graph toolbar – opens a toolbar to aid in viewing graph details (see Graph Toolbar section below)
- Refresh Rate – controls the sampling rate of the program and helps balance the need for greater detail with the available resources of the computer and control unit being sampled
- Export Data – used to export sampled data values to a Microsoft Excel®\* spreadsheet or comma-separated values (CSV) file for further analysis  
\*Requires the Microsoft Excel application
- Other
  - Stop / Start – controls sampling by stopping the process if it is running, or starting the process if it is not running
  - Clear samples – clears previously sampled data values from memory
  - Save settings – saves to an XML file the current settings based on the control unit selected
  - Recall settings – opens a Browse window to select an XML file containing previously saved settings

The graph toolbar provides additional controls for use with Actual Values graphs.



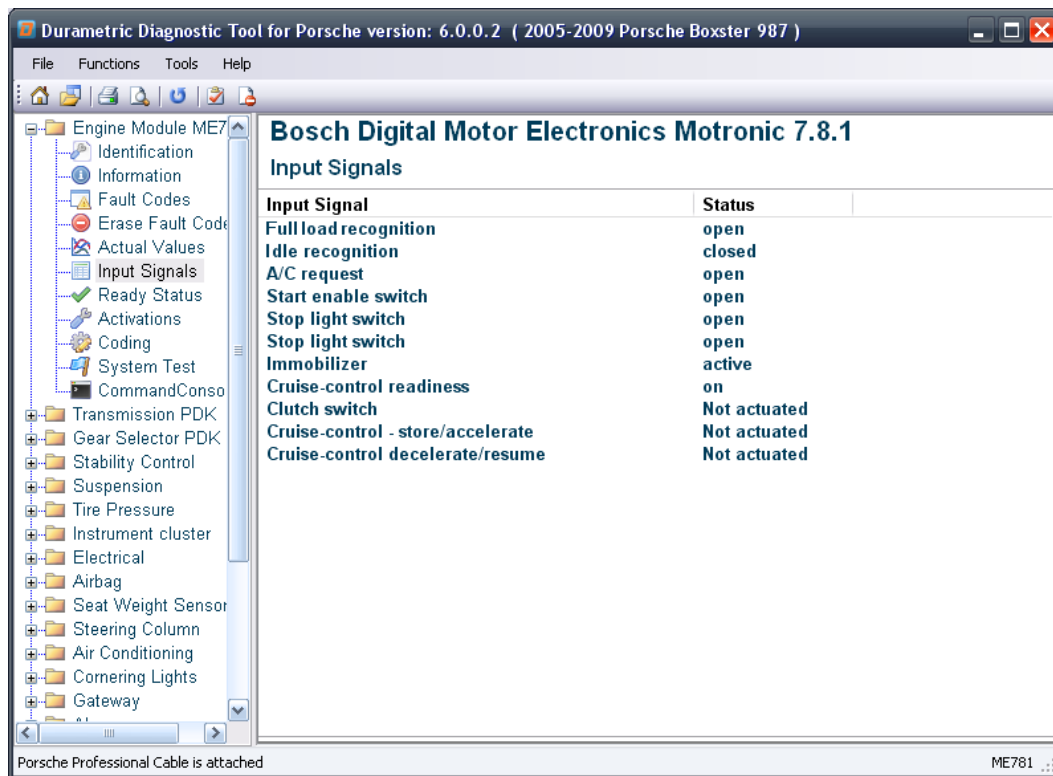
Actual Values graph toolbar

From left to right, the graph toolbar includes:

- Crosshairs – used to hover the mouse over a graph position to see the exact values of a point
- Zoom in/out – used to alternately magnify or diminish an area of the graph to show detail. Left-click and drag the mouse over the section you want enlarged.
- Zoom out all – used to zoom the graph back to full size
- Stop – used to stop sampling data values to view an event more closely
- Save – captures the current graph view to a graphic file
- Export data – saves sampled data values to a plain text file
- Page setup – portrait / landscape orientation settings for use with Print
- Print preview – displays preview of screen details to be printed
- Print – captures and sends a picture of the current graph to an available printer

### *Input Signals*

Similar to Actual Values, Input Signals convey the status of monitored components of the car. Unlike Actual Values, however, Boolean values represent the status of Input Signals. For example, Input Signals will typically have values such as Open / Closed, On / Off, or Yes / No. Along with actual values, input signals can help you understand your car's condition and help troubleshooting problems.



### Ready Status

Ready status, or “readiness,” is an indication by the car’s on-board diagnostics (OBD) of the status of several emissions monitors. Required on all USA cars since 1996, the readiness monitors check the emission control system and its components. If the emission control system is not “ready,” the car cannot legitimately meet emissions test standards.

Several factors can cause a vehicle’s ready status to be “not ready.” Some factors include:

- Recent fault code clearance
- Recent battery disconnect
- A pending problem with the emission control system

To meet readiness conditions, you must drive the car through a specific drive cycle. The drive cycle varies by make and model and includes driving through a range of conditions, engine speeds, and loads. Check your service manual and local emissions requirements for details.

### Activations

The Activations option allows you to start and stop supported components within the car for troubleshooting purposes. The tool supports components ranging from injection valves to windows and door locks. For example, to confirm all indicators of the instrument cluster function properly, you can use Activations for that control unit to turn them on for test purposes.

To activate supported components:

1. Select your model.
2. Select a control unit that supports activations.

3. Select *Activations*.
4. Click the *Start* button found to the right of the components listed in the right-hand pane.

Warning! Use *Activations* options with caution and only with complete knowledge of their function. For example, it is not a good idea to activate the coolant shutoff valve of a hot car for risk of damaging the engine.

### *Coding*

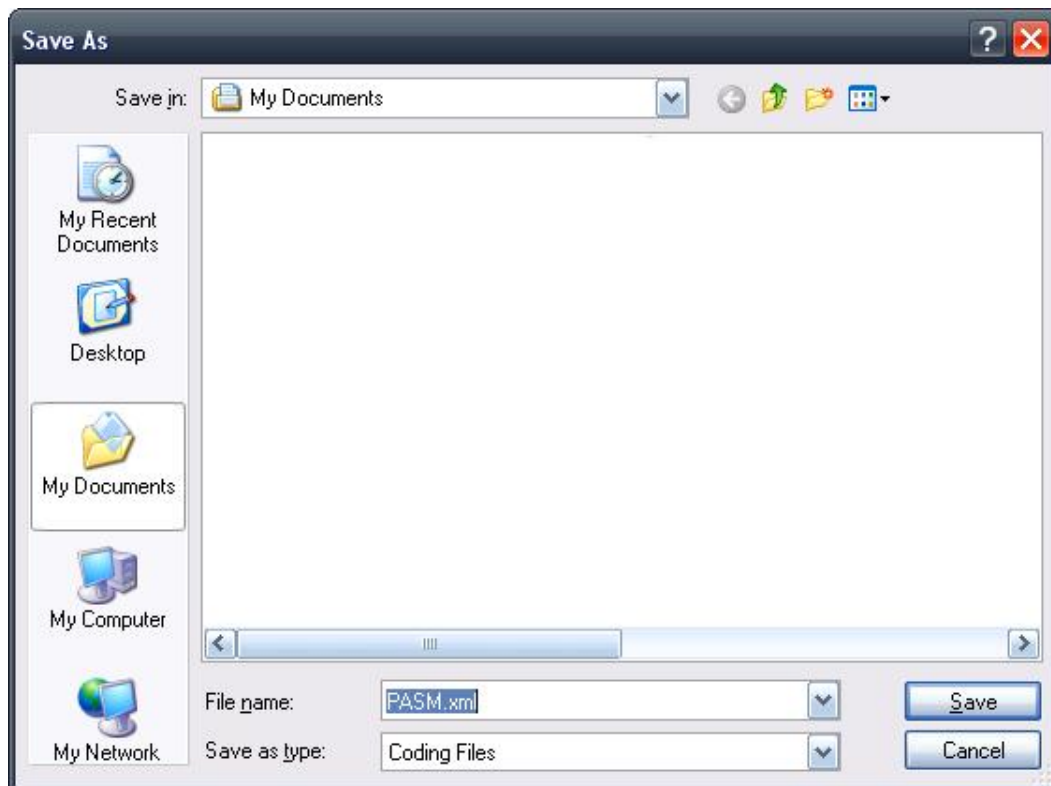
Available in the Professional kits only, the *Coding* option provides a way to back-up, restore, and change settings within supported control units. For example, you can save the settings of an old control unit you must replace and restore those settings to a new control unit. Durametric relies on internal part numbers and metrics to ensure you do not restore settings to unintended, incompatible control units. *Coding* options on supported control units vary.

To backup control unit settings:

1. Select a model.
2. Select a control unit that supports coding.
3. Select *Coding*.
4. Review the warning statement.
5. If you acknowledge the warning statement, click *I understand the risks (proceed with coding)*.
6. On the Backup / Restore tab, click the *Backup* button.

The *Save As* dialog appears. The program uses an XML file to save the backup settings. By default, the program names the file the same as the selected control unit and saves the file to the My Documents (or Documents) folder.

7. Save the XML. Note the save location and filename for future reference.



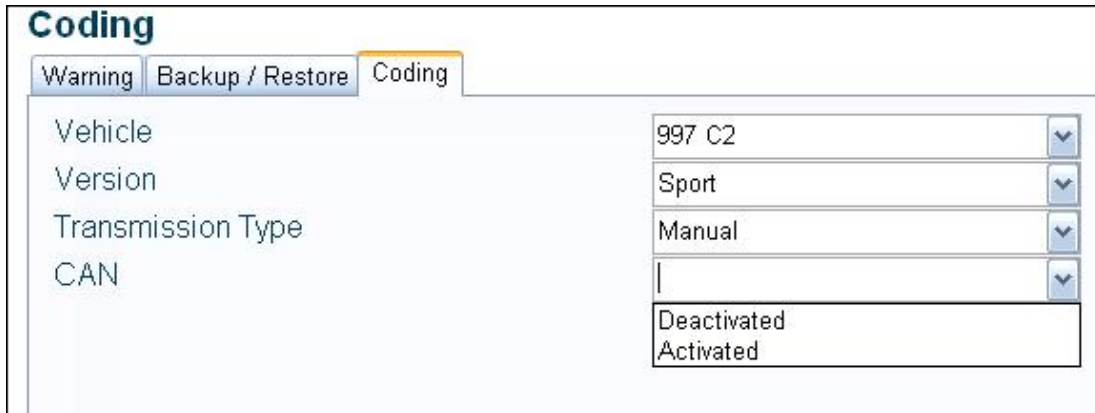
Save As dialog seen during Coding backup process

To restore saved control unit settings:

1. Select a model.
2. Select a control unit that supports coding.
3. Select *Coding*.
4. Review the warning statement.
5. If you acknowledge the warning statement, click *I understand the risks (proceed with coding)*.
6. On the Backup / Restore tab, click the *Restore* button. The *Open* dialog appears.
7. Browse to the location of your backup files.
8. Select an applicable backup file.
9. Click the *Open* button. The program then restores the settings to the control unit.

To edit control unit settings:

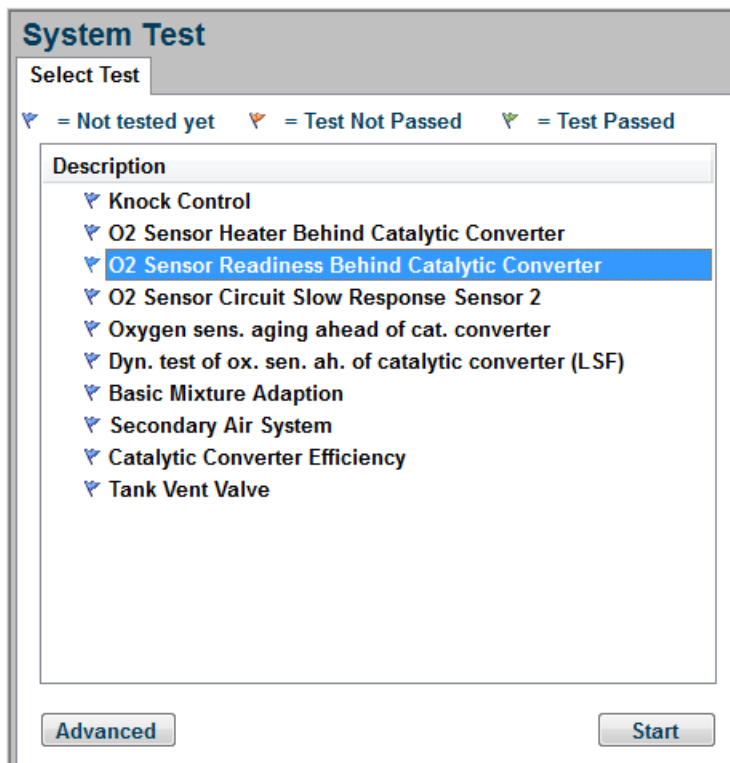
1. Select a model.
2. Select a control unit that supports coding.
3. Select *Coding*.
4. Review the warning statement.
5. If you acknowledge the warning statement, click *I understand the risks (proceed with coding)*.
6. Select the Coding tab. Editable options will appear.
7. Edit the settings as necessary. Settings changes take effect when you move the cursor to another field.



An example of the Coding dialog

### System Test

Engine control units in some models support a system test. The engine unit's system test runs a check of the engine's various emissions components. During the test, the cycle flags may be cleared and set again. If the test does not complete, the cycle flags will not be set. Most system checks require you to meet specific conditions before the test can begin.



The System Test dialog

The system test in Durametric has two modes of operation: single test or the advanced, simultaneous tests. On the Select Test screen (seen above), you can select to run a single test. Otherwise, click the *Advanced* button to run all tests and see results simultaneously.

## Commands

Many control units support the ability to receive single, non-repetitive requests to alter the status of settings. Separate from coding changes, the Commands feature includes such control unit requests as adaptation resets. On many models, you will use the Commands feature of the Instrument Cluster to reset the service interval.

To use commands:

1. Select a model.
2. Select a control unit that supports commands.
3. Select *Commands*.
4. Click *Send* adjacent to command you want to send to the control unit.



Click *Send* adjacent to the command you want to send to the control unit

## Command Console

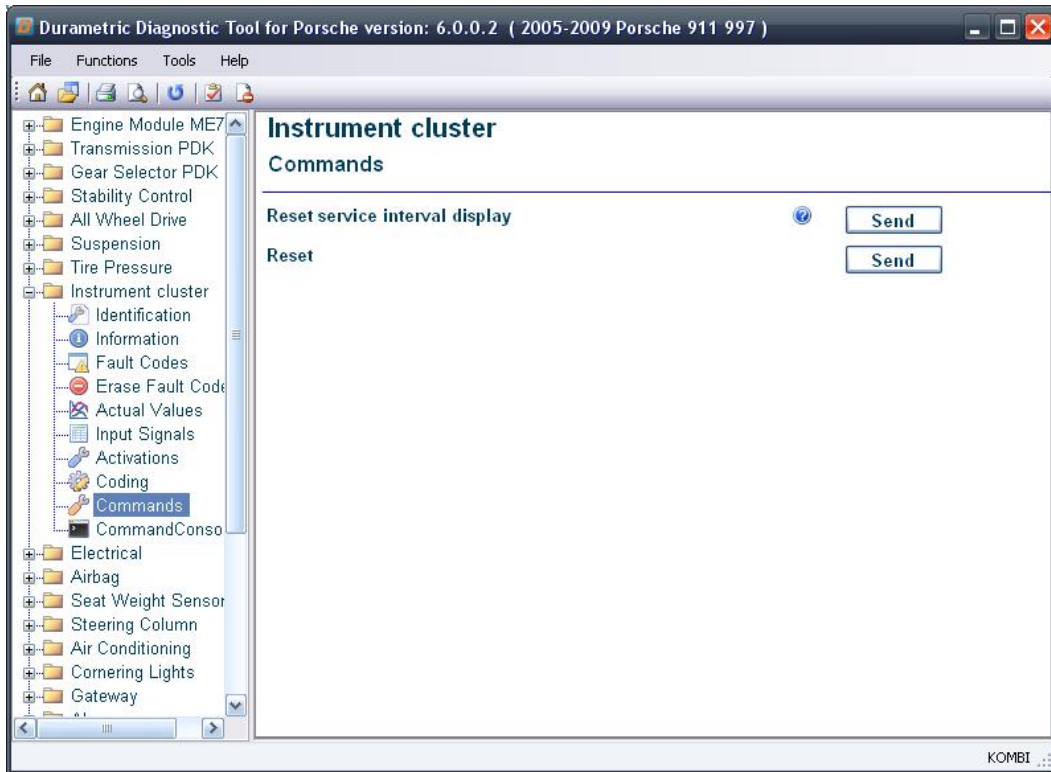
Available in the Professional kits only, the Command Console is a means to send low-level, manually configured requests to a control unit and see the response. Intended only for those who understand the low-level communication language of Porsche control units, you can use this feature for a deeper level of troubleshooting.

## Reset Service Reminders

Late-model cars utilize service intervals and reminders on the instrument cluster for oil service and inspections. These cars display the reminder when service is due. You should reset service intervals upon completion of the appropriate maintenance.

To reset the service reminder:

1. Select your model.
2. Select the instrument cluster.
3. Select *Commands*.
4. Click *Send* next to the service interval option.



Find service interval resets under the *Commands* option of the instrument cluster

### Short Test

The tool is capable of running a short test on any model selected. The short test scans the car for supported control units and queries each control unit found for trouble codes. Upon completion of the scan, the program returns a list of control units included in the search and any faults found. The program groups the trouble codes it finds by control unit and includes a brief description of the fault to aid in troubleshooting.

To perform a short test:

1. Select a car model from the *Choose Vehicle* dialog.
2. Select any equipment variations.
3. Select the *Functions* menu option.
4. Click *Short test all modules*.

### Set Workshop Information

Included with the Durametric Professional Kit only, you can customize the software for your business through the *Set Workshop Information* feature. With this feature, you can enter details such as your business name, address, phone number, and company logo. The information will appear on screens within the software and printed pages.

To set workshop information:

1. Select the *Functions* menu option.

2. Click *Set Workshop Information*.
3. Enter shop name, address, phone number, path to your logo, and dealer code (if applicable).
4. Select any of the available display options.
5. Click *Save*.
6. Close and re-open the program to affect changes.

The screenshot shows a software window titled "Durametric Diagnostic Tool for Porsche version: 6.0.0.2 ( 2005-2009 Porsche 911 997 )". The window has a menu bar with "File", "Functions", "Tools", and "Help". Below the menu bar is a toolbar with icons for home, print, save, undo, redo, and help. The main content area is titled "Workshop Information" and contains the following form fields:

- Shop Name: Durametric Software Inc.
- Address 1: 61451 SE Parrell Road
- Address 2: (empty)
- City, State Zip: Bend, OR 97701
- Phone: 888-854-5523
- Logo Path: C:\Documents and Settings\owen\Temp (with a browse button)
- Dealer Code: (empty)

Below the form fields are three checked checkboxes:

- Display workshop information on faults window
- Display workshop information on summary window
- Display workshop information on information window

A "Save" button is located at the bottom right of the form. At the bottom left of the window, it says "Select vehicle or control module". At the bottom right, it says "KOMBI".

Workshop Information edit screen

## Work Log

The Durametric tool includes a work log that can save Identification, Information, Fault Code, and Short Test information. You can use this feature to review diagnostic and work history data after using the tool. The program saves work logs as HTML files so you can share the information with others as needed.

### To Enable the Work Log

1. Open the *Choose Vehicle* dialog.
2. Select a model.
3. Select the *Create work log for this session* option.
4. Click *OK*.

The program creates a work log using the date and time of the diagnostic session. The program creates a separate work log each time you start the program.

### **To Review a Work Log**

1. Select the *File* menu option.
2. Click *Open Work Log*.
3. Select a log from the list based on the date / time stamp.
4. Click *Open*.

When saved, work log files are marked automatically with a date / time stamp for easy reference.

### **Updating the Software**

You can check for software updates direct from the Durametric program. This process requires an existing Internet connection.

To check for software updates:

1. Open the Durametric program.
2. Click on the *Tools* menu option.
3. Select *Check for updates*.

This action opens your default Internet browser to the [www.durametric.com/downloadv6.aspx](http://www.durametric.com/downloadv6.aspx) page. Compare the installed version on your computer with the current release indicated on the Download page. You will find your software version at the top of the Durametric program screen.

To update your software:

1. Close the Durametric program.
2. Uninstall the version of Durametric currently installed.
3. Click the Durametric Software Program link on the Durametric website.

### **Updating the Cable Firmware**

The standard interface cable manages communication between the Durametric software and your car's control units. Periodically, Durametric releases firmware updates to ensure our cables continue to perform as expected across various models and software versions.

To update the firmware:

4. Click the *Tools* menu item.
5. Click *Tool Information* from the menu.
6. Click the *Update Firmware* button.

Updating the firmware takes approximately 45 seconds. The standard interface cable must remain connected to the computer for the update to occur. Do not disconnect the cable during the firmware update.

## Porsche Diagnostic Connector Locations

The location of diagnostic connectors on most cars is under the dash on the driver's side. Here are some common connector locations:

- 944/968 – Under the dash on the passenger side
- 964 – On the passenger's side kick panel behind a round cover
- 993
  - 1994 – 1995 – For models with the 19-pin round connector, it is located on the passenger's side kick panel behind a round, plastic cover
  - 1995 – 1998 – For models with the 16-pin OBDII connector, it is located on the driver's side of the center console behind a round, plastic cover
- 996 / 986 – Under the dash on the driver's side
- 997 / 987 – Under the dash on the driver's side
- Cayenne – Under the dash on the driver's side behind a hinged, plastic cover

## Factory Racecars

You can access information in Porsche factory racecars using the Durametric Professional Racing kit. Do to so:

1. Select a model (996 / 997).
2. Select the appropriate Cup / RSR engine option.

The list of actual values for racecars covers most models, but not all actual values are available on all cars. There might be actual values listed in Durametric that the car does not support.

You can find the data link connector on racecars on the passenger's side of the roll-cage. Porsche Cup cars before 2001 have a normal data link connector and do not need a special cable.

## Common Problems and Solutions

Here is a list of some common problems and solutions.

Software will not install	<ul style="list-style-type: none"> <li>• Confirm you have an internet connection</li> <li>• Confirm your computer meets the minimum system requirements</li> <li>• Confirm there are no software installation restrictions at the firewall</li> <li>• Confirm you have appropriate rights to install software (especially important on Windows Vista)</li> <li>• Install (re-install) Microsoft .NET Framework 2.0 or 3.5 sp1</li> </ul>
Software will not start	<ul style="list-style-type: none"> <li>• Restart your computer</li> <li>• Confirm your computer meets the minimum system requirements</li> <li>• Reinstall the software from <a href="http://www.durametric.com">www.durametric.com</a></li> </ul>
Cable not recognized by the software	<ul style="list-style-type: none"> <li>• Confirm Windows Device Manager “sees” the cable when connected</li> <li>• Confirm Durametric USB cable drivers are installed</li> <li>• Confirm the cable is a genuine Durametric cable</li> </ul>
Initialization failure when trying to connect to a control unit	<ul style="list-style-type: none"> <li>• Cable is not securely connected</li> <li>• K-line short to ground or Battery+</li> <li>• CAN bus has entered “sleep” mode (MY2005+)</li> <li>• Control unit is faulty</li> <li>• Control unit not present</li> <li>• Control unit is different than the one selected in the Durametric software</li> <li>• Control unit not properly supported – contact technical support</li> </ul>
Cable LED turns red	<ul style="list-style-type: none"> <li>• Indicates an electrical short             <ul style="list-style-type: none"> <li>○ Between K1 or K2 and B+</li> <li>○ Between K1 or K2 and Ground</li> </ul> </li> <li>• Check for appropriate continuity between the ground, power, and communication pins at the diagnostic connector at the car</li> <li>• Check for electrical shorts by clicking Tools → Tool Information when connected to the car</li> </ul>
Cable LED won't turn green	<ul style="list-style-type: none"> <li>• Confirm there is a secure connection between the Durametric cable and the car</li> <li>• Confirm the car's ignition is in the 'on' position</li> <li>• Confirm the car's battery is fully charged or a back-up power supply is correctly attached</li> <li>• For CAN bus based cars, awaken the CAN network by switching the key to 'off' and then to 'on'. Confirm the check engine light appears on the instrument</li> </ul>

	<p>cluster display. Keep the CAN bus 'awake' during diagnostics by turning on the emergency flashers</p> <ul style="list-style-type: none"> <li>• Check for appropriate ground (pins 4 &amp; 5) and 12+ Volts (pins 1 &amp; 16) at the diagnostic connector of the car when the ignition is on</li> </ul>
"Cable not plugged in" message	<ul style="list-style-type: none"> <li>• Confirm the cable is securely connected to the USB port on your computer</li> <li>• Confirm there is power from the car to the cable and the LED on the cable is steady green</li> <li>• Confirm Durametric USB cable drivers are installed properly – reinstall cable drivers if necessary</li> <li>• Confirm Windows Device Manager "sees" the cable when it is connected</li> <li>• Confirm the cable is a genuine Durametric cable</li> </ul>
Cannot update the software	<ul style="list-style-type: none"> <li>• Confirm there is an update available</li> <li>• Confirm you have an internet connection on the computer that runs the Durametric software</li> <li>• Confirm you have the appropriate administrative rights to install software</li> <li>• Uninstall Durametric through the Windows Control Panel and reinstall USB Cable Drivers and Durametric Software Program from <a href="http://www.durametric.com">www.durametric.com</a></li> </ul>
Module "failed to initialize"	<ul style="list-style-type: none"> <li>• Confirm the cable is securely connected to the car and computer</li> <li>• Confirm the control unit exists in the car</li> <li>• Wiring problem in car to control unit (very common in the 993 at the data link connector)</li> <li>• Electromagnetic interference: Confirm all stereos, radar detectors, navigation equipment and amplifiers are turned off while performing diagnostics</li> <li>• Computer processor is too slow: See <i>Computer Performance Suggestions</i> in this guide</li> </ul>

### Computer Performance Suggestions

Control units fitted to newer cars communicate at a fast 500 kbps (kilobits per second) and require timing windows as small as 5 milliseconds. In this case, some computers might experience difficulty connecting. Here are some suggestions to help improve the performance of your computer:

- Confirm the computer meets the minimum requirements for processor speed and memory (1.8 GHz dual-core processor or faster and 1 GB of RAM)
- Close all other programs during diagnostics
- Remove any CD / DVD from CD or DVD drive
- Connect laptops to power or change Power Management settings to maximum performance. Most laptops will run at reduced processing speed when running on battery power.

- Defragment the hard disc. When your hard disc is heavily fragmented, the computer must work harder and therefore, runs slower.
- Temporarily disable anti-virus software. Some virus protection software can slow or stop the communications ports.

### Send Log to Durametric

Use this option only upon direct request of Durametric technical staff. Durametric does not respond to unsolicited communications logs.

When working with Durametric technical staff, they may ask you to submit troubleshooting logs via the Send Log to Durametric option. You will find this option under the Tools menu. An Internet connection is required to send the information to Durametric.

To send a communications log to Durametric:

1. Click Tools | Logging | Enable Logging.
2. Restart the program.
3. Perform any processes or functions previously found to fail. This ensures the program captures the communication details between the program and the car.

**Send Communications Log** Remove All Logs

If you are having a problem please contact technical support before sending a log. This form should not be used for contacting support.

Select Log  5/29/2009 4:17 PM  
 5/29/2009 4:18 PM

Name

Email

Year

Make

Model

VIN

Problem

Send Data Cancel

4. Select a log from the list. The program lists the logs in chronological order, based on the time of creation.
5. Enter your name, email, and details about the car. Be sure to include a detailed description of the problem.
6. Send the log by clicking *Send Data*.

## Index

About Durametric .....	3	ECU files .....	4
Activations .....	16	Erase Fault Codes .....	12
Activations tab .....	<i>See Actual Values</i>	Erase Shadow Fault Codes .....	12
Actual Values .....	12	Factory Racecars .....	24
Tabs.....	13	Fault Codes.....	11
Available Actual Values tab.....	<i>See Actual Values</i>	Freeze Frames .....	11
Cables.....	3	Framework.....	4
50' extension cable .....	3	Freeze Frames.....	<i>See Fault Codes</i>
Connections .....	5	Graph .....	<i>See Actual Values</i>
Standard interface cable .....	3	How the Program Works.....	4
CAR files .....	4	Icons.....	<i>See Main Interface</i>
Clear faults in all modules.....	9	Identification.....	11
<i>Clear faults in all units</i> .....	12	Information .....	11
Coding .....	17	Installing the Software	
Settings Backup.....	17	Security warning .....	5
Settings Edit .....	18	Main Interface	
Settings Restore .....	18	Icons .....	10
Command Console.....	20	Menus .....	9
Commands.....	19	Options tab .....	<i>See Actual Values</i>
Common Problems and Solutions.....	25	Product Variations .....	4
Computer Performance .....	26	Enthusiast Kit .....	4
Connector Locations .....	23	Professional Kit .....	4
Control Unit Functions .....	10	Professional Racing Kit .....	4
Activations .....	16	Reset Service Reminders.....	20
Actual Values .....	12	Screen Layout.....	8
Coding .....	17	Send Log to Durametric .....	27
Command Console.....	20	Service Reminders	
Commands .....	19	Resets.....	20
Erase Fault Codes.....	12	Set Workshop Information.....	21
Erase Shadow Fault Codes .....	12	Shadow Fault Codes.....	11
Fault codes.....	11	Short Test.....	9, 20
Identification.....	11	System Requirements .....	5
Information .....	11	Troubleshooting.....	<i>See Common Problems and Solutions</i>
Service reminder reset.....	<i>See Reset Service Reminders</i>	Updating the Cable Firmware .....	23
Reminders		Version	
Shadow Faults Codes .....	11	Software.....	<i>See Screen Layout</i>
Short test .....	<i>See Short Test</i>	Work Log .....	22
Digital format.....	<i>See Actual values</i>		