

Quick Start Guide

System Requirements

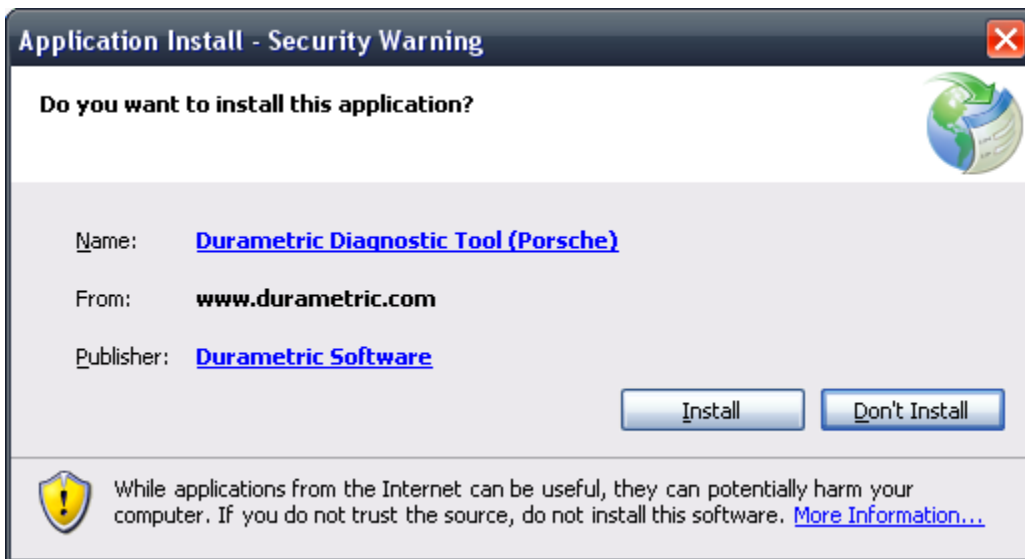
- Microsoft® Windows XP or Windows Vista, Windows 7 (All versions, including both 32 and 64 bit systems)
- 1.8GHz, dual core processor or faster
- 1 GB Memory (RAM)
- 1 GB available disk space
- Available USB 2.0 port (*USB 3.0 not yet supported. Computers supporting USB 3.0 not recommended.*)
- Internet Explorer 6.0 or later
- Available Internet connection (required for installation and updates)
- Screen resolution of 800x600 or greater
- Microsoft® .NET Framework 2.0 or 3.5 sp1 (for Windows XP and Vista)
- Adobe Acrobat Reader (for viewing and printing documentation)

Installing the Software

Durametric does not distribute a software CD with the cables. Install the software from the www.durametric.com website before connecting the cable(s).

To install Durametric:

1. Using the Internet Explorer browser, go to <http://www.durametric.com>.
2. Click *Downloads* from the left column.
3. Select the program version you want to install.
4. Install the *Durametric cable drivers*.
5. Install the *Durametric software program*. If you do not have Microsoft .NET Framework 2.0 or 3.5 sp1, the program will prompt you to install it before continuing.
6. If prompted with the following security warning, click *Install*.



Using the Durametric Tool

Upon successful installation of the software, you are ready to connect the cables and start the program.

Connect the Cables

WARNING: Do NOT use a power inverter to power your computer when using Durametric.

Depending upon the kit you ordered, you will have one, two, three, or four cables. Before starting the program, connect the cables as follows:

- 1) Switch on the car's ignition.
- 2) If the car is a 2005 model or newer, turn on the hazard lights (emergency flashers).
- 3) Connect the OBDII-end of the Durametric cable to the diagnostic port on your car.
 - a) If you purchased the 50' extension cable, you can connect it between the male ODBII-end of the Durametric cable and the car.
 - b) If you are working on early model cars and have the early-model adapter cable, connect it between the Durametric cable and car or between the 50' extension cable and the car.
 - c) If you are working on a Porsche factory racecar and have the Durametric Cup car adapter cable, connect it between the Durametric cable and car or between the 50' extension cable and the car.
- 4) Verify a steady green light on the Durametric cable indicating power from the car.
- 5) Connect the Durametric cable to the USB port on your computer.

Start the Program

Start the Durametric program after you connect the cables. To start the program:

1. Click the Windows *Start* button.
2. Click *All Programs | Durametric 6*.

Alternatively, you can double-click the *Durametric 6* desktop icon.

Upon starting the program, you will see the Durametric logo screen followed by the screen(s) of the main program.

Select a Model

When the software is open, you will see a list of models to choose. Select the appropriate model and click *OK* to begin diagnostics.